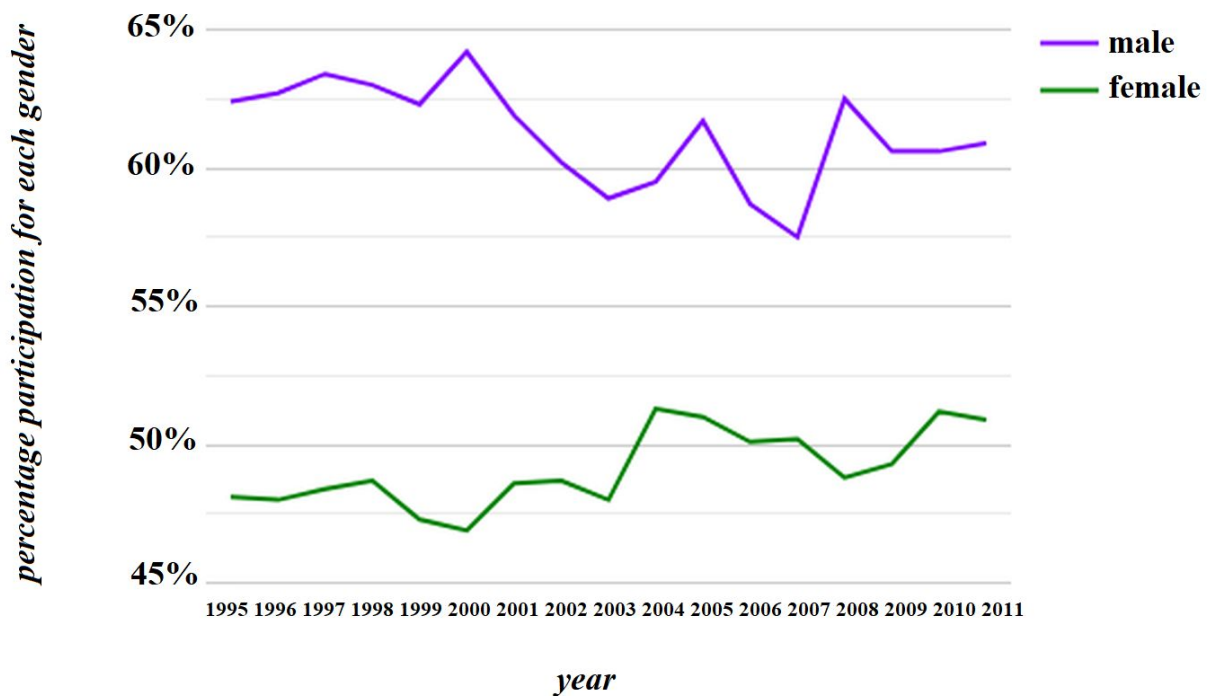


IELTS Writing Task 1: Line Graph Questions - Video Prompt

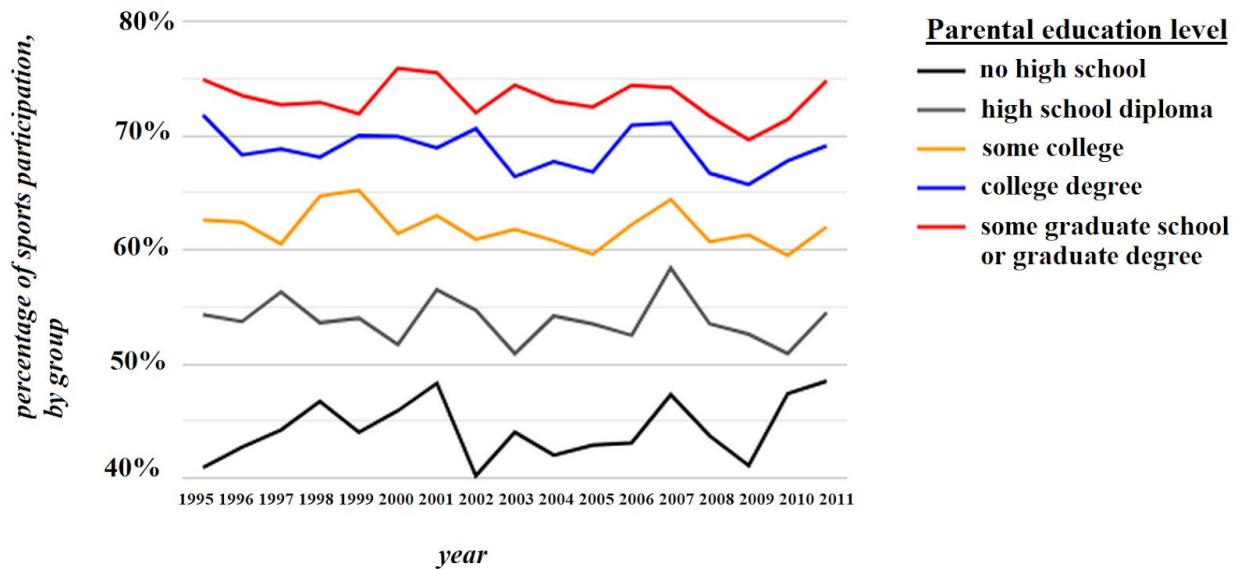
The graphs below gives information about 12th grade high school sports participation in the United States from 1995-2011.

Summarise the information by selecting and reporting the main features, and make comparisons where relevant.

**12th grade participation in sports, by sex
(national statistics, United States, 1995-2011)**



12th grade participation in sports, by top parental education level (national statistics, United States, 1995-2011)



The two line graphs track sports participation among twelfth graders between 1995 and 2011 in the United States. The first graph tracks sports participation according to the highest educational level of a student's parents, from parents without a high school degree to parents who went to grad school. The second graph traces sports participation by sex.

Per the first graph, with every additional level of parental education, student sports participation goes up by five to ten percent in most years. For example, in 2003, twelfth graders with high school educated parents had 50% participation, while twelfth graders whose parents had partly completed college participated at 60%. The second graph shows that male twelfth graders are about 10-15% more likely to participate in sports than females.

Beyond those general trends, there are some fluctuations in the data. In 1998 and 2002, for example, participation rates for children of parents who went to grad school dropped, and at the same time participation rates rose for students whose parents have college degrees; as a result, these two groups had very similar numbers in these two years. Similarly, a rise in female participation and a drop in male participation caused the gap to shrink to slightly less than 10% in one year, 2007.